



GORDONTON SCHOOL NEWSLETTER

Anchored in MANA - Manaakitanga - Awhina - Ngākau Pono - Ako



TE PIHINGA TEAM

Nga mihi o te ra (Greetings of the day)

Welcome to Week 8

It's hard to believe it is only four weeks until the end of the term with Easter in the middle of that time. The start of the year seems to have flown by. Autumn is starting to tell us it's here in the mornings and jerseys and jackets are starting to appear in through the gate.

THIS WEEK'S WHAKATAUKI

**He maurea kai
whiria!**

Ignore small
matters and direct
effort toward
important projects

This whakatauki encourages us to keep things in perspective, to not get bogged down by the small things, the little details, but instead to maintain our focus on the vision, on what is important. It could be used to keep people on track, and/or to remind us/people to maintain focus on what's



EPILEPSY DAY
PURPLE DAY
Friday 26th March



EWCS SWIMMING
Wednesday 31
March



EASTER TUESDAY
Remember school
is closed on
Tuesday 6 April



TE KĀKANO TRIP
To Hamilton
Gardens Tuesday
13 April

Sports Committee

The Gordonton School Sports committee met last Monday for their AGM. For those of you new to the school, Gordonton has a strong sporting culture and we annually field multiple teams across the Saturday (and mid week) sporting codes. If not for this committee it would place an onus on teachers and parents to organise and manage this for our children. The Committee for 2021/22 is as follows:

Chair	Kelly Mills
Treasurer	Kim Lucey
Sports Coordinator	Kerry Boxall
Football Coordinator	Daniel Nelson
Netball Coordinator	Amanda Foster
Hockey Coordinator	Lauren Fenn

The 3 code coordinators - ensure information flow to coaches/managers, provide a contact for families, coaches and managers, attend registration meetings and report back issues to the Sports Committee

Sponsorship	Keith O'Donnell to oversee
Uniforms Coordinator	Melissa Moody

PTA

The Gordonton Parent Teacher Association also met last week for their AGM. Stepping down from her role as Chairperson but remaining on the PTA was Stacey Van Der Drift. I would like to thank Stacey for her leadership through some challenging times but always with a smile and sense of what would benefit the children.

The election of officers on the PTA is as follows:

Chairperson	Debbie Hawkins
Secretary	Anna Greenan
Treasurer	Dee Haakma
Committee	Julie Dons
	Stacey Van der Drift
	Katy Baxter
	Sandy Page

This week in New Zealand's Historic past:

22 March 1902	George von Zedlitz - first foreign professor of modern languages arrives in NZ to take up a tenure at Victoria University.
23 March 1848	Otago founding day - The immigrant ship <i>John Wickliffe</i> arrives with the first of many Scottish settlers.
24 March 1770	Kidnapped Ngāti Kahu chief Ranginui died from scurvy aboard the French ship <i>St Jean Baptiste</i>
25 March 1847	Pistol Duel between Dr Isaac Featherston and Col William Wakefield in Wellington. Featherston (Editor of the Wellington Independent) had said some inflammatory things about Wakefield (Principal of the NZ Land company) and was challenged to a duel. Neither man was injured.
26 March 1896	65 men die in the Brunner mine disaster in Westland.
27 March 1883	Salvation Army established in New Zealand with the arrival of two English officers; Captain George Pollard and Lieutenant Edward Wright.
28 March 1923	New Zealand Forest and Bird Society founded.



There are also a number who have nominated themselves as friends of the PTA and are willing to help out at events and fundraisers.

The first PTA event for 2021 is

Easter Picnic

Wednesday 31st March 5.30 - 8pm

Come along and have a picnic dinner on the field. Bring along your dinner, drinks and picnic blanket (strictly no alcohol) and join in the fun. Great to meet families from school and welcome the new families to the area.

There will be an Easter egg hunt for the children and a few games running which will be adults against children. Just a great end of term celebration.

Tree Removal

When you walk into the school you will notice the large Oak tree that was beside the hall has been removed. The Board of Trustees made the decision after commissioning a safety survey of that and several other trees in the grounds. While it was a beautiful tree, its age and deterioration meant that it was becoming a hazard.

You can see how much morning light is now being let in but also how much damage has been sustained by the surrounding roofs. The Board is working through options to design a more useful outdoor area in the space that has been created.

Te Pihinga Trip to Hamilton Gardens.

Last Thursday Te Pihinga visited Hamilton Gardens as part of their learning on Kotahitanga/Unity, building relationships and diversity. They wandered through the collection of gardens exploring each one's story. The children observed how the gardens offer an insight into different civilisations dating back from 4000 years ago and the relationship between people and plants. They found it hard to believe

that the Garden was once the city's main rubbish dump.

The children looked closely at the different cultural gardens and noticed the special attributes of each. They drew different plants, flowers, geometrical shapes, buildings, art features and colours from them.

Imaginations ran wild when we ventured into the Fantasy Gardens with the Surrealist Garden being a highlight. The playground was another favourite place to stop offering lots of opportunities for laughter and make believe play.

Here are some quotes from the children about the gardens.

"The gardens have never ending paths that lead you to each magical place".

"The flowers made a colour and magical blanket".

"The clear waters were inviting my toes to take a dip".

"We never knew where the doors would lead us".

Visiting Hamilton Gardens reminds us how lucky we are to have this wonderful asset in our community. As well as showcasing the spectacular gardens, it's commitment to sustainability is something for us to model ourselves on.

Thank you to the parents that attended the trip and to our wonderful tamariki who displayed the school values during our trip.

Board of Trustees Meeting

The Board of Trustees meets on Tuesday 23rd of March at 6.30pm.

School Swimming Pool

The School pool has now been closed for the summer season. There are still one or

two practices for our Eastern Waikato inter-school representatives but general class and community use has finished.

On behalf of the Board I'd like to thank our community users for their manaakitanga of our pool through the summer. Please return your key for a \$20.00 refund.

Purple Day

We are holding Purple Day this Friday in support of Epilepsy NZ. So please come dress in purple, gold coin donation.

Heoi anō tāku mō nāianeī (That's all for now)

Keith O'Donnell, Principal

PURPLE DAY

- for epilepsy. 26th March

Purple Day is a grassroots effort dedicated to increasing awareness about epilepsy around the globe. People around the world are asked to wear purple and to spread the word about epilepsy.

This year, we hope **every day during March** will be **Purple Day**.

DID YOU KNOW



Epilepsy is the world's most common brain disorder



10% of New Zealanders will have a seizure during their lifetime, while 1-2% will be diagnosed with epilepsy



Anyone at any age can be diagnosed with epilepsy.



Epilepsy New Zealand has been providing vital support and training for over 60 years



HEROES WANTED!

SIMPLY ORGANISE A LOCAL AWARENESS EVENT **DURING** MARCH & HELP RAISE AWARENESS FOR EPILEPSY.

THIS COULD BE A MUFTI DAY OR FACE PAINTING AT SCHOOL, A MORNING TEA AT WORK, OR EVEN AN EVENING WITH YOUR LOCAL CLUB OR COMMUNITY GROUP - THE SKY'S THE LIMIT!





EPILEPSY NEW ZEALAND®
THE NATIONAL EPILEPSY ASSOCIATION OF NEW ZEALAND
Kia riria ki te tangata - see the person

Supporting Epilepsy
Purple Day® March 26
www.purpleday.org
Around The World®

Register online: www.epilepsy.org.nz or Call: 0800 EPILEPSY (374 537)



BEFORE

AFTER



RAINBOWS
 Henderson Early Childhood Centre
 21 College Drive, Gordon
office@rainbows.org.nz
www.rainbows.org.nz Phone: (07) 8243188
 Rainbows are a well established Christ an
 Centre based in rural surroundings,
 6 months - 6 years
 8:00am - 4:30pm
 Sessions are full days available
 20 hours ECE subsidy and WTNZ



TE PIHINGA HAMILTON
GARDENS TRIP



**Gordonton School,
Hamilton**

Holiday Programme

Term 1 2021

Full Day 8.00am to 6.00pm **\$ 45**

Trip Day 8.00am to 6.00pm **\$ 55**

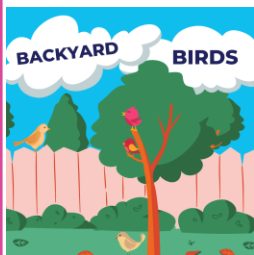
Short Day 8.00am to 3.00pm **\$ 35**

Half Day 8.00am to 1.00pm **OR** 1.00pm to 6.00pm **\$ 25**

Mon 19th April

Backyard Birds

Spread your wings and get creative with DIY bird homes, macrame bird feeders, crafts, challenges and more!



Tue 20th April

Sensational Senses

Put your senses to the test today with blindfolded drawing, slime, putty and playdough creations, DIY harmonicas and challenges to test your knowledge of taste and smell!



Wed 21st April

TRIP: Tom & Jerry: The Movie

Everyone's favourite cat and mouse team bring their classic rivalry to the big screen in the animated comedy adventure, TOM & JERRY – only in cinemas.



Thu 22nd April

Spies & Detectives

Could you crack the code and uncover who stole the missing diamonds? How about write secret messages in invisible ink...? Find out today as we do all that and more!



Fri 23rd April

Pancakes and Pyjama Party

Come dressed in your cosiest pyjamas for this pancake and pyjama party day! Make your own bath bomb, dream catcher, and eye mask then finish the day with some tasty pancakes!



Mon 26th April

Closed

Sorry, we're closed for ANZAC Day.

Take care and we'll see you tomorrow!



Tue 27th April

Out of this World

Journey to a Galaxy far, far away today as we compete in astronaut training before learning how craters form and creating sun catchers, shooting star launchers and fizzing moon rocks!



Wed 28th April

TRIP: Hamilton Hop Along

We spring into town and see amazing inventions that tackle issues in our region, experience the wonders of innovations and get inspired to get inventing!



Thu 29th April

Dino Dash!

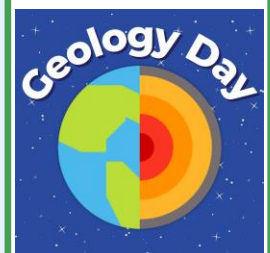
Roar, stomp and roar some more this Dino day! Today we're digging for dinosaur fossils and creating our own! Have fun with Fizzing Dino Eggs and tasty landscape cups!



Fri 30th April

Geology Day

Create edible crystals, erupting volcanoes, quicksand, agate art and more today! As we explore all things Geology!



Onsite: 021 914 411
Head Office: 0800 274 172
gordonton@skids.co.nz

MSD-Approved
Work & Income OSCAR Subsidy available!
Book now at www.sKids.co.nz/book

